



New development "Potaarde" - 2 and 3-bedroom apartments

Potaarde 1, 1082 Berchem-Sainte-Agathe

Reference

6635348

Price

€ 315.000 - € 418.000

Description

Looking for your dream home? Look no further! Fierce Immo is proud to present its latest new-build development in Berchem-Sainte-Agathe.

A perfect combination of modernity and comfort, while meeting the latest environmental standards (e.g. voltaic panels, rainwater recovery, triple glazing, etc.), this 10-apartment project is ideally located between town and country.

Each apartment has been carefully designed to meet the needs of future residents. The bright, spacious living areas provide a warm, welcoming atmosphere. Finishes and fittings, as chosen by the buyer, are of the highest quality. Fully equipped kitchens, elegant bathrooms and practical storage spaces are an integral part of every apartment. There's also a garden or terrace to relax on after a long day.

The location of our new development is another major advantage. Close to shops, schools and public transport (the city center is just a few minutes away thanks to numerous bus and tram lines), you'll enjoy a dynamic urban lifestyle in a calm, peaceful environment. In fact, Kattebroek Park is just across the street from your apartment! Fancy a stroll? The Promenade verte paths are just waiting for you!

Don't miss this opportunity to become the owner of an exceptional new home, made to last. Contact us now for more information and a presentation in our Brussels office.

Ground floor

Type	Reference	Surface	Bedrooms	Price	Status
Office	6635359	-	-	-	Sold
Commercial	6635363	670 m ²	-	-	Sold
Commercial	6635361	670 m ²	-	-	Sold

Floor 1

Type	Reference	Surface	Bedrooms	Price	Status
Flat	6635356	550 m ²	2	-	Sold
Flat	6635350	550 m ²	2	€ 345.000	For sale
Flat	6635351	550 m ²	3	€ 380.000	For sale
Flat	6635357	550 m ²	2	€ 334.000	For sale

Floor 2

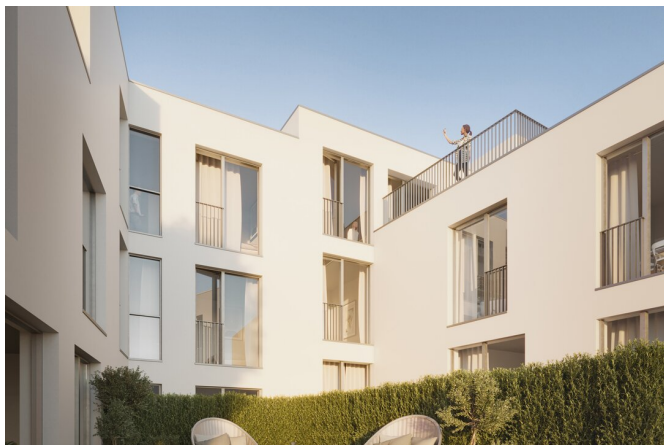
Type	Reference	Surface	Bedrooms	Price	Status
Flat	6635360	550 m ²	2	-	Sold
Flat	6635353	550 m ²	2	€ 340.000	For sale
Flat	6635352	550 m ²	3	€ 375.000	For sale
Flat	6635354	550 m ²	2	€ 315.000	For sale

Floor 3

Type	Reference	Surface	Bedrooms	Price	Status
Flat	6635364	550 m ²	2	-	Sold
Flat	6635358	550 m ²	3	€ 418.000	For sale

FIERCE

I M M O



FIERCE

I M M O



FIERCE

I M M O



Interested in this estate?

Contact us for more information



Michaël Baert

Responsible New constructions - IPI 512.639

- T. +32 472 46 93 44
- E. michael@fierceimmo.com

FIERCE

I M M O