



## 2 and 3-bedroom apartments - works are completed!

Potaarde 1, 1082 Berchem-Sainte-Agathe

**Reference**

7203972

**Price**

€ 320.000 - € 425.000

## Description

Looking for your dream home? Look no further! Fierce Immo is proud to present its latest new-build development in Berchem-Sainte-Agathe.

A perfect combination of modernity and comfort, while meeting the latest environmental standards (e.g. voltaic panels, rainwater recovery, triple glazing, etc.), this 10-apartment project is ideally located between town and country.

Each apartment has been carefully designed to meet the needs of future residents. The bright, spacious living areas provide a warm, welcoming atmosphere. Finishes and fittings, as chosen by the buyer, are of the highest quality. Fully equipped kitchens, elegant bathrooms and practical storage spaces are an integral part of every apartment. There's also a garden or terrace to relax on after a long day.

The location of our new development is another major advantage. Close to shops, schools and public transport (the city center is just a few minutes away thanks to numerous bus and tram lines), you'll enjoy a dynamic urban lifestyle in a calm, peaceful environment. In fact, Kattebroek Park is just across the street from your apartment! Fancy a stroll? The Promenade verte paths are just waiting for you!

Don't miss this opportunity to become the owner of an exceptional new home, made to last. Contact us now for more information and a presentation in our Brussels office.

## Ground floor

Type	Reference	Surface	Bedrooms	Price	Status
Office	7203976	-	-	-	Sold
Commercial	7203974	670 m <sup>2</sup>	-	-	Sold
Commercial	7203975	670 m <sup>2</sup>	-	-	Sold

## Floor 1

Type	Reference	Surface	Bedrooms	Price	Status
Flat	7203978	550 m <sup>2</sup>	3	€ 380.000	For sale
Flat	7203979	550 m <sup>2</sup>	2	-	Sold
Flat	7203982	550 m <sup>2</sup>	2	-	Sold
Flat	7203992	550 m <sup>2</sup>	2	€ 340.000	For sale

## Floor 2

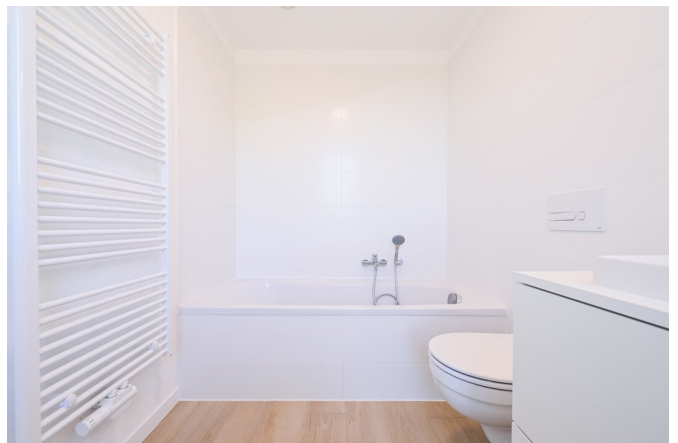
Type	Reference	Surface	Bedrooms	Price	Status
Flat	7203988	550 m <sup>2</sup>	2	-	Sold
Flat	7203985	550 m <sup>2</sup>	2	-	Sold
Flat	7203987	550 m <sup>2</sup>	3	-	Sold
Flat	7203994	550 m <sup>2</sup>	2	€ 320.000	For sale

## Floor 3

Type	Reference	Surface	Bedrooms	Price	Status
Flat	7203981	550 m <sup>2</sup>	2	-	Sold
Flat	7203993	550 m <sup>2</sup>	3	€ 425.000	For sale

# FIERCE

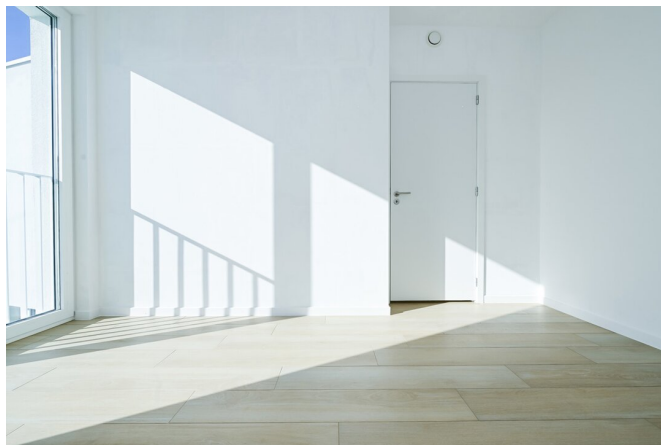
I M M O





# FIERCE

I M M O



# FIERCE

I M M O





# FIERCE

I M M O





## Interested in this estate?

Contact us for more information



### Michaël Baert

Responsible New constructions - IPI 512.639

- T. +32 472 46 93 44
- E. [michael@fierceimmo.com](mailto:michael@fierceimmo.com)

# FIERCE

I M M O